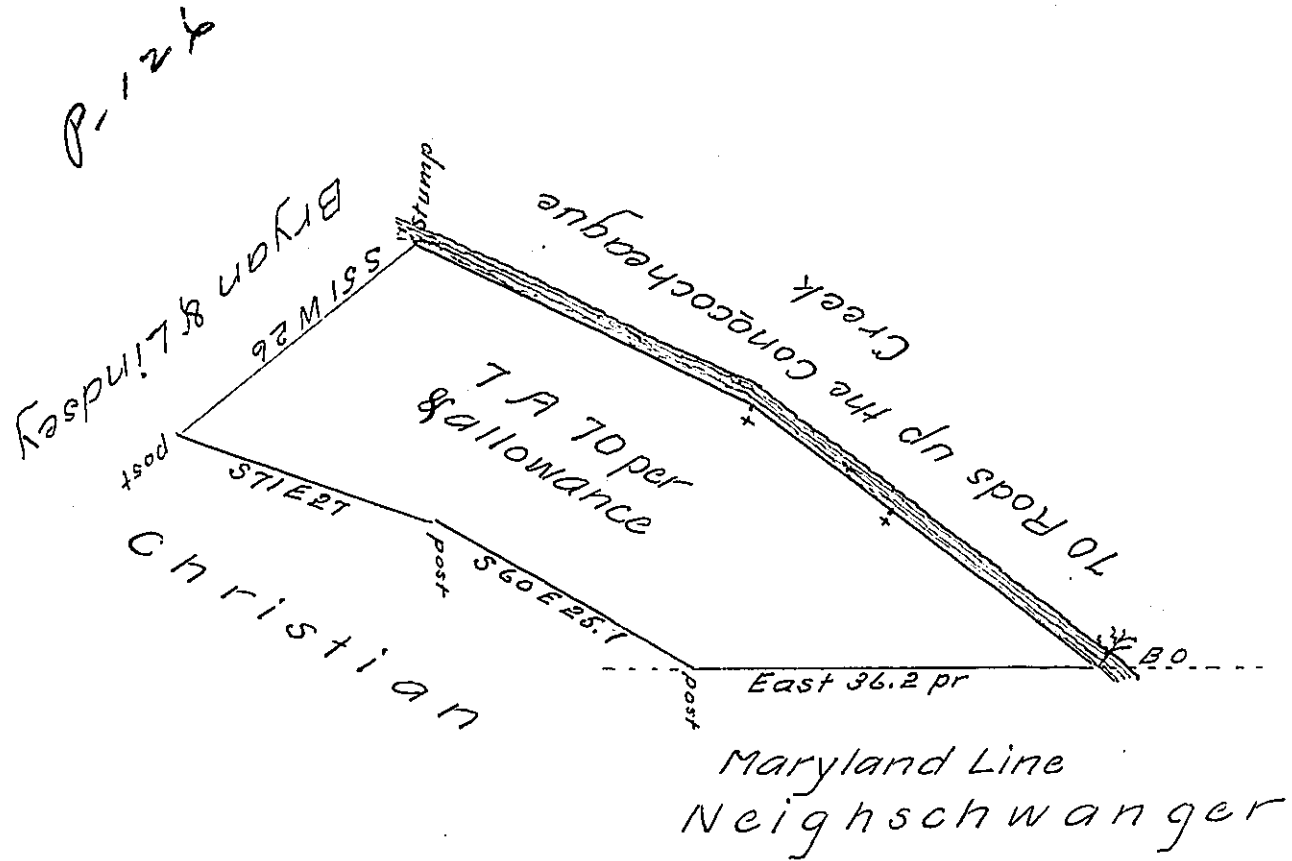


FORM No. 1.

Courses of the  
Creek  
N 56 W 22.8  
N 53 1/2 W 14.8  
N 65 W 32.4  
70 Rods



A Draught of a certain piece of Land situate in Montgomery Township ———— Containing seven Acres & 70 perches & allowance of 6 per Cent for Roads & Surveyed June 15<sup>th</sup> 1839 In pursuance of a warrant granted John Bryan for 10 Acres bearing date May 15<sup>th</sup> 1839

Jacob Salade Esq<sup>r</sup>  
Surveyor General of  
Pa

Hugh Auld D.S.

IN TESTIMONY that the above is a copy of the original remaining on file in the Department of Internal Affairs of Pennsylvania, made conformably to an Act of Assembly approved the 16th day of February 1833, I have hereunto set my hand and caused the Seal of said Department to be affixed at Harrisburg, this fourteenth day of October 1907.

*Henry Howard*  
Secretary of Internal Affairs.